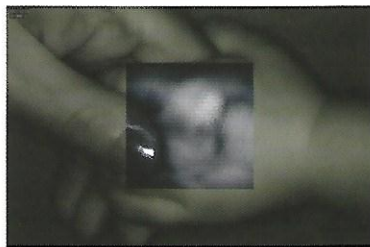


Vein Probe

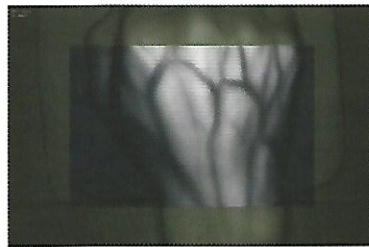
A medical device to visualize blood vessels in real-time

- Reveals the location and pattern of the blood vessels
- Non-invasive infrared detection technology makes it safe and hygienic
- Can be used with a broad range of patients ; including infants, elderly and emergency patients

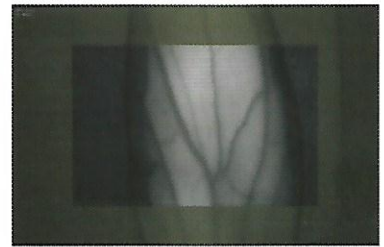
// Vein Probe Images



Infant hand



Hand



Arm



Temple



Chin



Calf

// Vein Probe Application



Blood collection



Intravenous injection



Plastic surgery



Diagnosis of varicose vein



South Korea patent (10-0823886, 10-1606560, PCT/KR2017/010340)
 U.S. patent (US 8,467,857)

We provide Customized Improvements!



VPism - C

[Compact type]

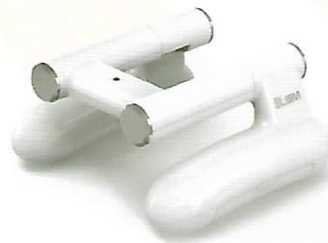
- Compact size
- Freely adjustable camera position and portable



VPism - D

[Desk type]

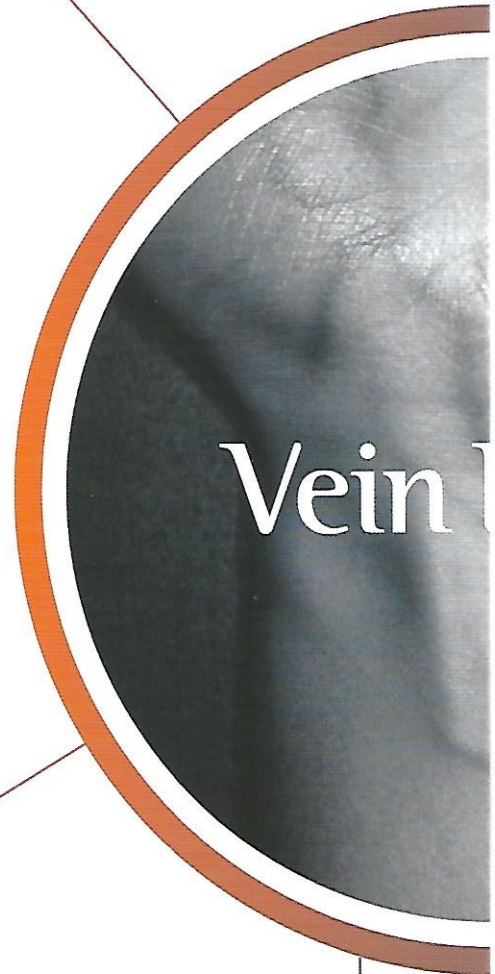
- Optimal design for intravenous injection and blood drawing procedures
- Easy to use and portable



SLism - F

[Accessory]

- Specialized light source to see more clearly the blood vessels of the face and other body parts





[Fixed type]

- Adjustable movement of camera and display
- Has built-in cradle

VPism - S



[Stand type]

- Adjustable movement of camera and display
- Has built-in wheel stand for flexible use

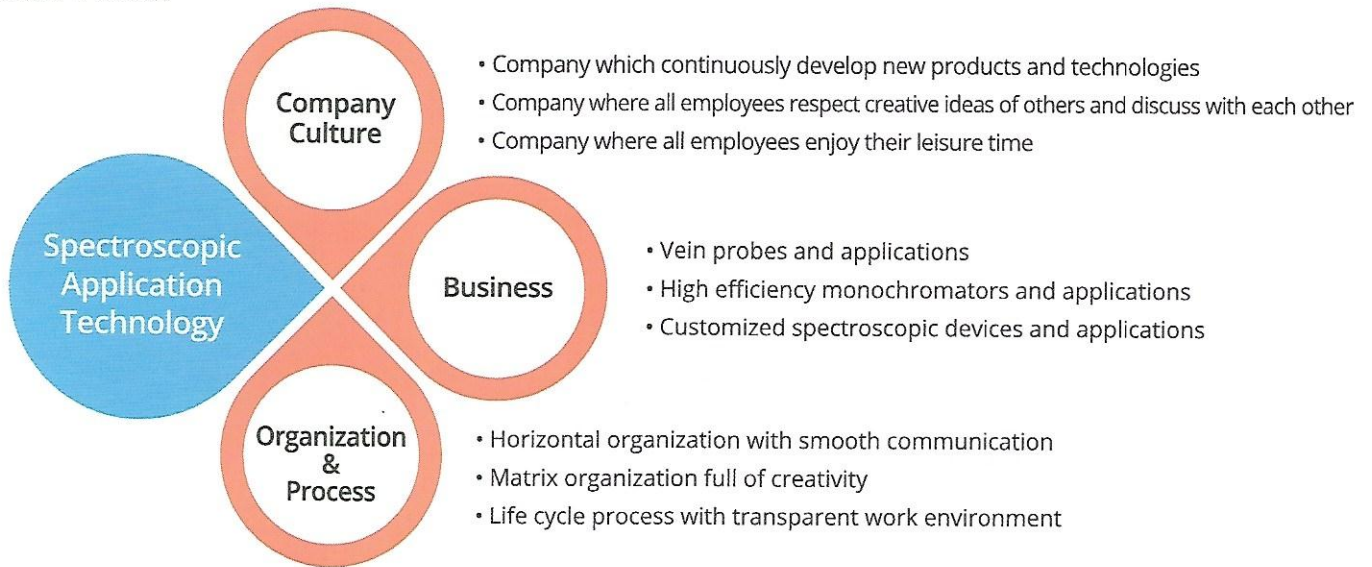


SLism - N

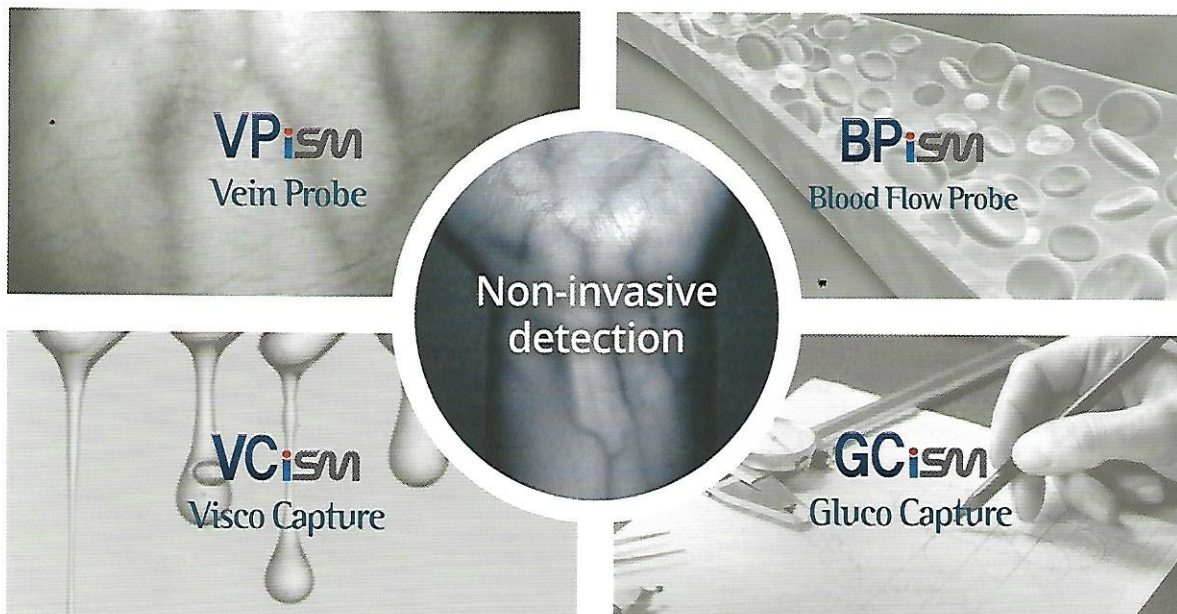
[Accessory]

- Specialized light source to see more clearly the blood vessels of the nose

// iiSM Vision



// iiSM Technology



// iiSM History

